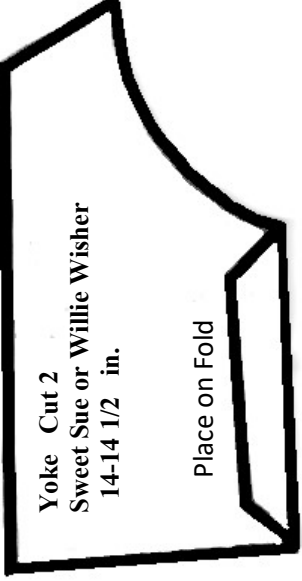
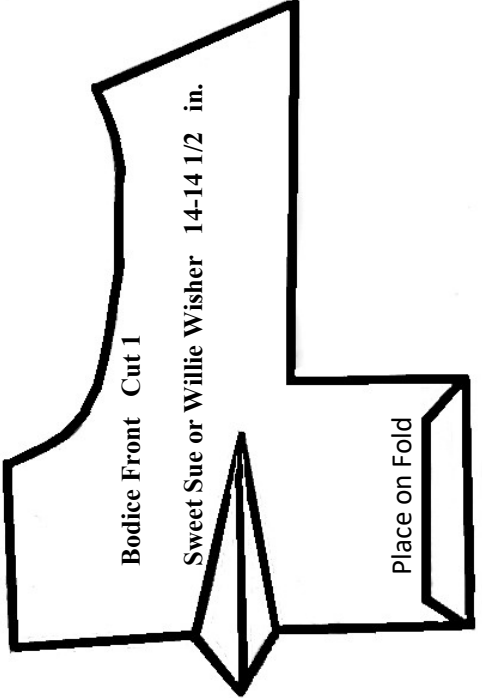


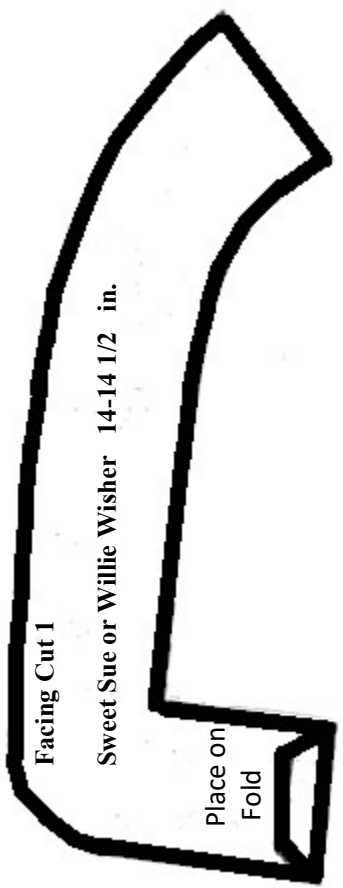
**Sleeve**

**Sweet Sue or Willie  
Wisher**

**14-14 1/2 in.**

**Cut 2**





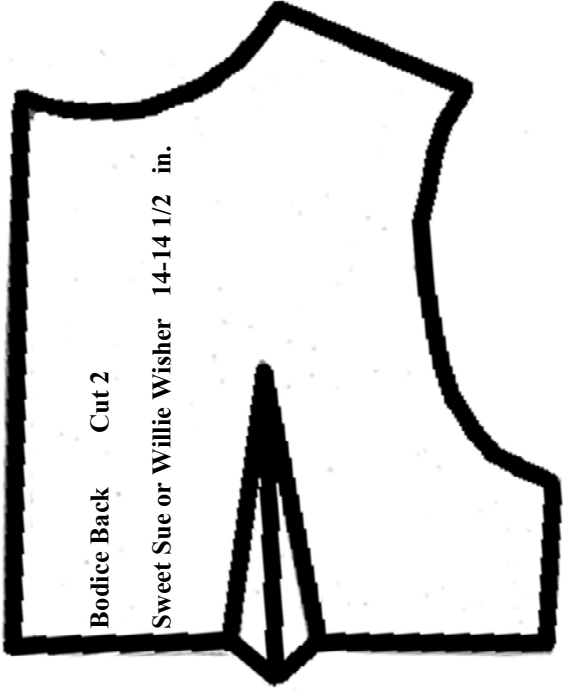
Facing Cut 1

Sweet Sue or Willie Wisher 14-14 1/2 in.

Place on  
Fold

**Bodice Back Cut 2**

**Sweet Sue or Willie Wisher 14-14 1/2 in.**



**Place on Fold**

**Bloomers  
Sweet Sue or Willie  
Wisher  
14-14 1/2 in.  
Cut 1**

**Place on Fold**

**Dress Skirt  
Sweet Sue or Willie  
Wisher  
14-14 1/2 in.  
Cut 1**